

**Weltmeisterschaft der
Rettungshunde Team FCI 2014
VALSUSA – Torino
ITALIEN**

**World FCI Championship for
rescue dogs team 2014
VALSUSA – Torino – ITALY**



**Championnat Mondial FCI pour
team de chiens de secours 2014
VALSUSA- Torino- ITALIE**

**Campeonato del Mundo FCI por
equipos de perros de socorro 2014
VALSUSA – Torino– ITALIA**

**Campionato Mondiale FCI per Team
di Cani da Soccorso 2014
VALSUSA– TORINO
ITALIA**

21 – 24 AGOSTO 2014



INTRODUCTION

FCI has instructed ENCI to organize the world Championship for rescue dog teams.

ENCI in turn has required the logistic collaboration of the “Associazione Nazionale Alpini (ANA)”, that has provided the necessary resources for the organization of the event.

The synergy of this two National Associations has provided their best skills in dog fields and in organization, to react in the best way to the request of FCI.

WORLD CHAMPIONSHIP LOGO



ORGANIZING TEAM

E.N.C.I. coordinators

Dott. ABELE BARBATI Cav. B. PICCINELLI

- **Giovanni Luigi Martinelli** (Rescue Dog Units A.N.A. Coord.)
- **Marco Grasso** (Rescue Dog Units A.N.A. Valsusa Coord.)
- **Piero Bunino** (Rescue Dog Technician)
- **Paolo Parisio** (Civil Protection A.N.A. Valsusa Coord.)
- **Roberto Ronco** (Secretary)



World FCI Championship for rescue dogs team 2014
VALSUSA – TORINO – ITALY - 2014, August, 21 to 24



The Judges for the FCI WORLD CHAMPIONSHIP FOR RESCUE DOG TEAMS 2014

F - Tracking

FL - Area Search

T - Rubble

SUPERVISOR



World FCI Championship for rescue dogs team 2014
VALSUSA – TORINO – ITALY - 2014, August, 21 to 24



FCI COMMISSION

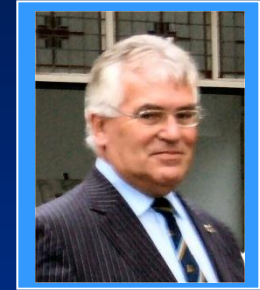
The Rescue Dog Commission is an optional Commission of FCI, and has the task to represent rescue dogs and to organize for them sport meetings.

The Rescue Dogs Commission is composed of delegates of FCI. The local organizations (LAO) who wish join the Commission should make request to the FCI.

All decisions must be approved by the council to get validity. The Commission is headed by a president and three vice-presidents elected among the delegates.

The Rescue Dog Commission has drawn International rules like the examination (IPO-R) and the International Testing Standards for Rescue Dog Teams Tests.

PRESIDENT



Frans Jansen
Nederland



World FCI Championship for rescue dogs team 2014
VALSUSA – TORINO – ITALY - 2014, August, 21 to 24





WHAT IS “E.N.C.I.”

E.N.C.I. “Ente Nazionale della Cinofilia Italiana” is an association of private law, recognized under the RD January 13, 1940 n.1051 under the supervision of the Ministry of Agricultural Policies.

Its purpose is to protect the recognized dog breeds as well, improving and increasing their breeding, as well as regulating and promoting their use and development for zootechnical purposes, as well as sports.

ENCI manages the maintenance of stud books and registers in accordance with local regulations, on the basis of specifications approved by decree of the Ministry in harmony with the UE laws as well as in compliance with the guidelines of the Federation Cynologique Internationale (FCI).



World FCI Championship for rescue dogs team 2014
VALSUSA – TORINO – ITALY - 2014, August, 21 to 24





WHAT IS “ ASSOCIAZIONE NAZIONALE ALPINI (ANA) ”

- Associazione Nazionale Alpini (A. N.A.) was born in Milan in 1920 on the initiative of a group of retired officers of the Alpine Corps with the aim of preserving and passing on traditions, keeping them year after year.
- The initiative was successful and in a few years the association expands through the whole National Alpine region.

Today, the ANA has a workforce of about 330.000 members, with 80 sections in Italy, 35 sections in the various countries of the world, from Canada to Australia. The sections are divided into 4,307 groups. Ordinary members plus 51,500 annexed members.



World FCI Championship for rescue dogs team 2014
VALSUSA – TORINO – ITALY - 2014, August, 21 to 24





THE ANA “CIVIL PROTECTION”

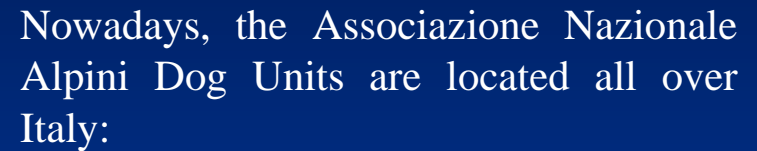
- Following the events of earthquake in Friuli (1976) in many groups came the idea to equip units ready to start for emergency purposes, so the Irpinia earthquake of 1980 found the ANA organization fully skilled.
- After few years the individual initiatives Groups will become the National Coordination of ANA Civil Protection.
- In the context of well-established machine of ANA Civil Protection, the importance of having dogs trained for rubble search, for missing persons and for rescue in water, was immediately clear.



World FCI Championship for rescue dogs team 2010
VALLE SERIANA – Bergamo – ITALY - 2010, August, 19 to 22



Dog Units



**Torino, Valsusa, Alessandria,
Cuneo, Como, Lecco,
Bergamo, Brescia, Varese,
Milano, Verona, Vicenza,
Verona Salvamento, Belluno,
Conegliano, Treviso, Abruzzi,
Pordenone.**





Most important Rescue Operations carried out by Associazione Nazionale Alpini Dog Units

RUBBLE

1976 FRIULI – ITALY

1980 IRPINIA – ITALY

1987 VALTELLINA – ITALY

1989 ARMENIA

1994 PIEMONTE – ITALY

1996 GARFAGNANA – ITALY

1997 UMBRIA – ITALY

2002 MOLISE – ITALY

2003 ALGERIA

2003 BAM - IRAN

2009 ABRUZZO - ITALY

2012 EMILIA ROMAGNA - ITALY

MISSING PERSONS

**SINCE 1986 MORE THAN
300 MOUNTAIN RESCUE
OPERATIONS**



**World FCI Championship for rescue dogs team 2014
VALSUSA – TORINO – ITALY - 2014, August, 21 to 24**



WORLD CHAMPIONSHIP FOR RESCUE DOG TEAM 2014



World FCI Championship for rescue dogs team 2014
VALSUSA – TORINO – ITALY - 2014, August, 21 to 24



WHERE IT TAKES PLACE:

in VALSUSA (TO)



SOME DISTANCES:

TURIN CENTRE : 15 KM

SUSA CENTRE: 30 KM

BARDONECCHIA : 80 KM

CASELLE AIRPORT : 10 KM



“ROCCIAMELONE mountain”

THE MOST IMPORTANT MOUNTAIN
(3.538 M) OVERLOOKING VALSUSA



World FCI Championship for rescue dogs team 2014
VALSUSA – TORINO – ITALY - 2014, August, 21 to 24



DISCIPLINES

RESEARCH RUBBLE AREA

RESEARCH AREA

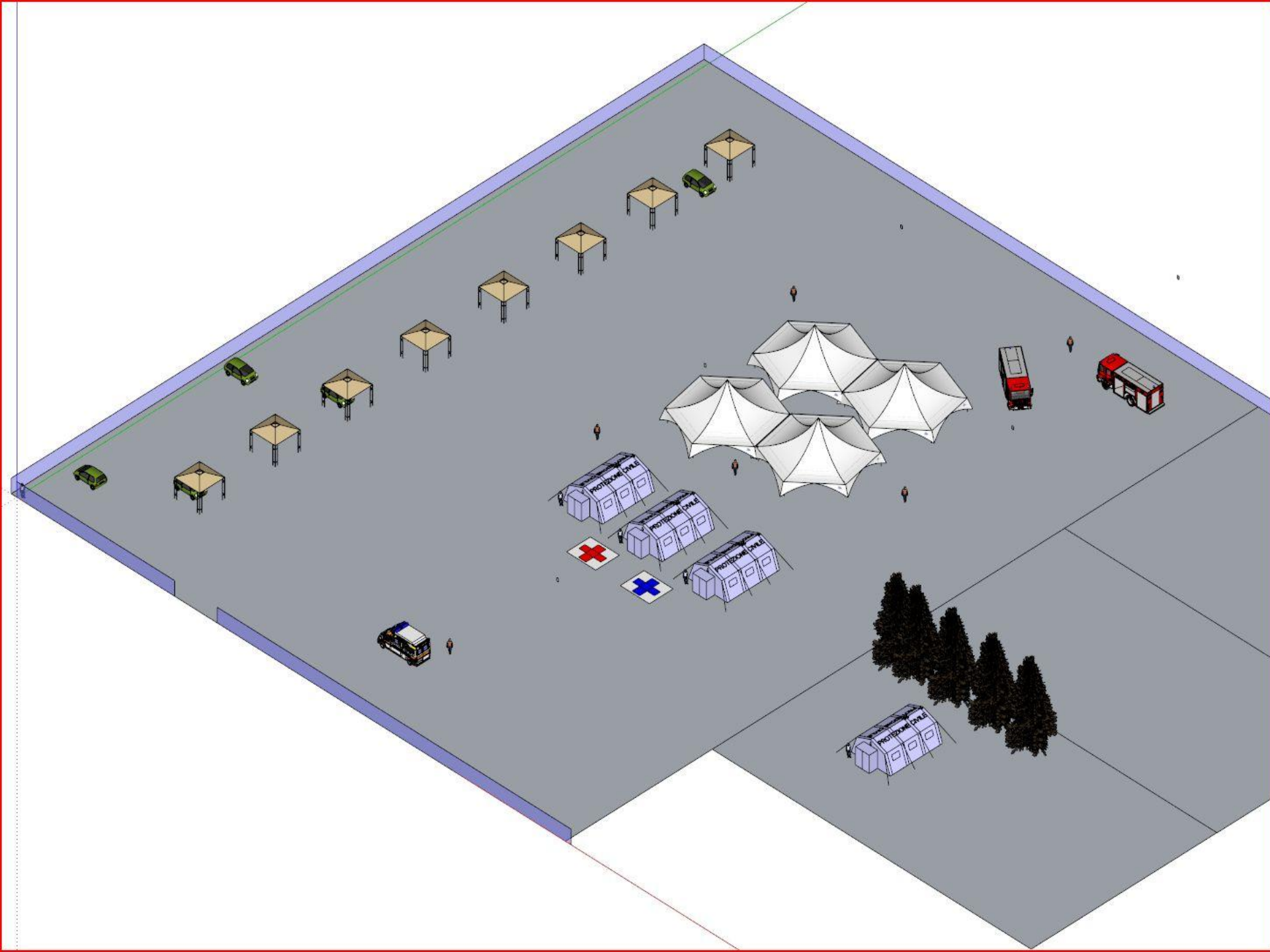
TRACKING

OBEDIENCE AND DEXTERITY



World FCI Championship for rescue dogs team 2014
VALSUSA – TORINO – ITALY - 2014, August, 21 to 24





BASE CAMP and RESEARCH RUBBLE AREA

The Base Camp will have:

- "Olympic Village"
- parking
- first aid health and veterinary service
- meal's area
- meeting's area

Near the Base Camp (about 100 m)
there is the Research Rubble Area (in
evidence with red line)

The Research Rubble Area is spread in
an area of about 3500 sqm.



World FCI Championship for rescue dogs team 2014
VALSUSA - TORINO - ITALY - 2014, August, 21 to 24

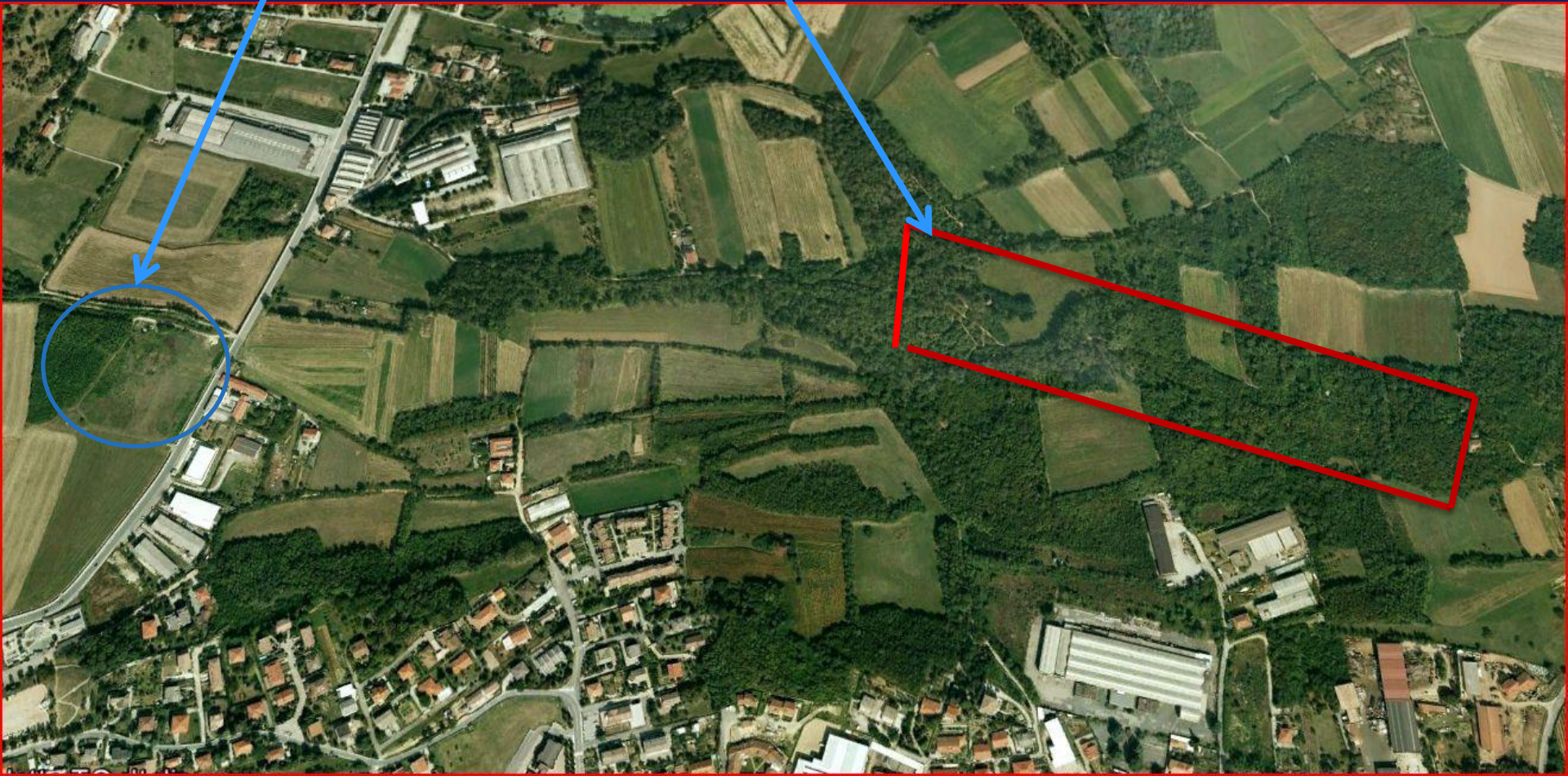


RESEARCH AREA

BASE CAMP

RESEARCH AREA

DISTANCE: 1 KM



World FCI Championship for rescue dogs team 2014
VALSUSA - TORINO - ITALY - 2014, August, 21 to 24



TRACKING

TRACKS



BASE
CAMP



World FCI Championship for rescue dogs team 2014
VALSUSA - TORINO - ITALY - 2014, August, 21 to 24



OBEDIENCE AND DEXTERITY



**CASELETTE SPORTS FIELD: ABOUT 300 COVERED SIT PLACES,
LOCATED ABOUT 800 M FROM BASE CAMP**



**World FCI Championship for rescue dogs team 2014
VALSUSA – TORINO – ITALY - 2014, August, 21 to 24**



**RESERVED SHADED PARKING AREA FOR
ATHLETES AND GUESTS WILL BE
AVAILABLE NEAR THE CASELETTE
SPORTS FIELD**

**BIG DOG'S RECREATION AREA WILL BE
AVAILABLE**

**EVERYTHING AT THE FOOT OF THE
MUSINE' MOUNTAIN - REALLY VERY NICE
PLACE**



**ALL AREAS FOR
TESTS AND BASE CAMP WITH
FIRST AID HEALTH,
VETERINARY SERVICE AND
MEETINGS AND MEALS AREA
ARE IN A RADIUS OF:**

1,5 KM



IN THE BASE CAMP WILL BE AVAILABLE:

A.N.A. FIRST AID HEALT SERVICE

**WHITH MOBILE UNIT FOR FIRST AID, HOSPITAL TENT AND MEDICAL
STAFF FOR ATHLETES AND GUESTS**

VETERINARY STATION

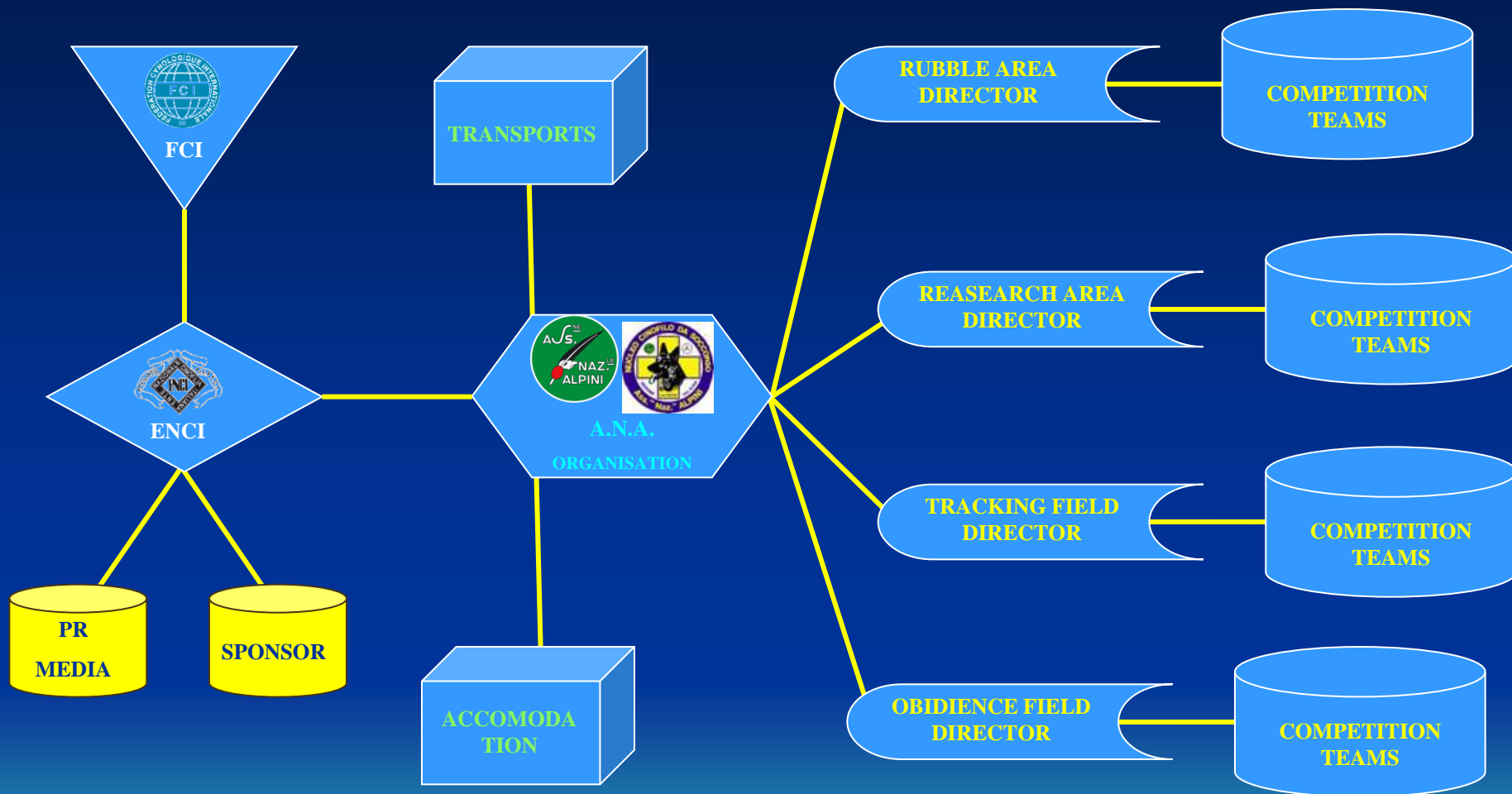
FOR VISITS AND FIRST AID, ALWAYS AVAILABLE

FOOD SERVICE

**A COVERED STRUCTURE WILL BE AVAILABLE FOR ALL MEALS
SERVED AT MODEST PRICES AND ALSO A SNACK-BAR SERVICE
ALWAYS OPEN**



LOGISTIC ORGANIZATION



World FCI Championship for rescue dogs team 2014
VALSUSA - TORINO - ITALY - 2014, August, 21 to 24



NATIONS INVITED

ARGENTINA

AUSTRIA

CZECH
REPUBLIC

DENMARK

ITALY

SLOVAKIA

SWEDEN

SWITZERLAND

CHINA

FINLAND

FRANCE

GERMANY

IRELAND

SLOVENIA

JAPAN

PERU'

RUSSIA

BELGIUM

HOLLAND



World FCI Championship for rescue dogs team 2014
VALSUSA – TORINO – ITALY - 2014, August, 21 to 24



PROGRAM

Wednesday August 20, 2014

Arrival of all Teams at the Base Camp:

**CASELETTE VIA VALDELLATORRE 125 (TORINO)
ITALY**

N 45°06'41,84" E 7°29'02,03"

accomodation



**World FCI Championship for rescue dogs team 2014
VALSUSA – TORINO – ITALY - 2014, August, 21 to 24**



PROGRAM

Thursday August 21, 2014

08:00 am

Departure of Teams from accomodations

09:00 - 14:00

In the foreseen seats:

OBEDIENCE AND DEXTERITY

AND

BASE CAMP

Test Area and Veterinarian check

16:00

OPENING CEREMONY

20:00 - Dinner



World FCI Championship for rescue dogs team 2014
VALSUSA – TORINO – ITALY - 2014, August, 21 to 24



PROGRAM

Friday August 22, 2014

07:00

Departure of Teams from accomodations

08:00 - 13:00 and 14:00 - 18:00

In the foreseen seats:

OBEDIENCE AND DEXTERITY

RESEARCH RUBBLE AREA

REASEARCH AREA

TRACKING

19:00

Return of the Teams in the accomodations

20:00 - Dinner



World FCI Championship for rescue dogs team 2014
VALSUSA - TORINO - ITALY - 2014, August, 21 to 24



PROGRAM

Saturday August 23, 2014

07:00

Departure of Teams from accomodations

08:00 - 13:00 and 14:00 - 18:00

In the foreseen seats:

OBEDIENCE AND DEXTERITY

RESEARCH RUBBLE AREA

REASEARCH AREA

TRACKING

19:00

Return of the Teams in the accomodations

20:00 - Dinner



World FCI Championship for rescue dogs team 2014
VALSUSA - TORINO - ITALY - 2014, August, 21 to 24



PROGRAM

Sunday August 24, 2014

09:00

Close of activities and classification writing

10:30

Award ceremony

WORLD CHAMPIONSHIP CLOSING CEREMONY

12:30

Lunch

16:00

Departure



World FCI Championship for rescue dogs team 2014
VALSUSA – TORINO – ITALY - 2014, August, 21 to 24



INTERNET WEBSITE

www.wcrescuedog2014.com



World FCI Championship for rescue dogs team 2014
VALSUSA – TORINO – ITALY - 2014, August, 21 to 24



**THANK YOU FOR YOUR
ATTENTION AND
WE WAIT YOU
IN VALSUSA.**



**World FCI Championship for rescue dogs team 2014
VALSUSA – TORINO – ITALY - 2014, August, 21 to 24**

